

LEGACY

REPLAT OF TRACT "G-1" AND TRACT "G-2",
 SHERWOOD FOREST PLAT NO. 1 (P.B. 62, PG. 163-168, P.B.C.R.)
 A PORTION OF
 SECTION 13, TOWNSHIP 46 SOUTH, RANGE 42 EAST
 PALM BEACH COUNTY, FLORIDA

THIS INSTRUMENT PREPARED BY SCOTT A. GUZZI
 SCOTT A. GUZZI AND ASSOCIATES, INC. - SURVEYORS AND MAPPERS
 6041 KIMBERLY BOULEVARD, SUITE H, NORTH LAUDERDALE, FLORIDA, 33068

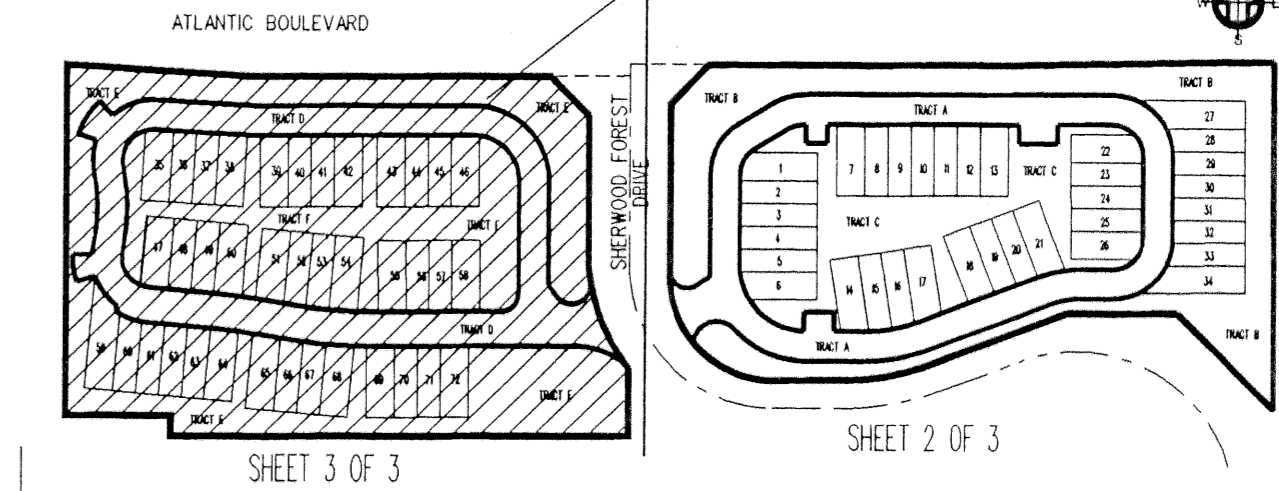
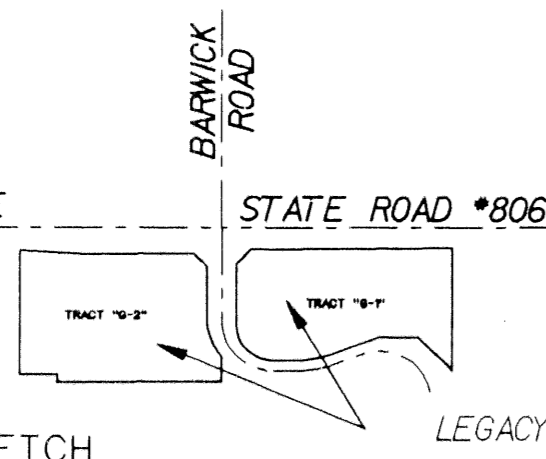
MILITARY TRAIL

WEST ATLANTIC AVENUE

STATE ROAD #806

CONGRESS AVE.

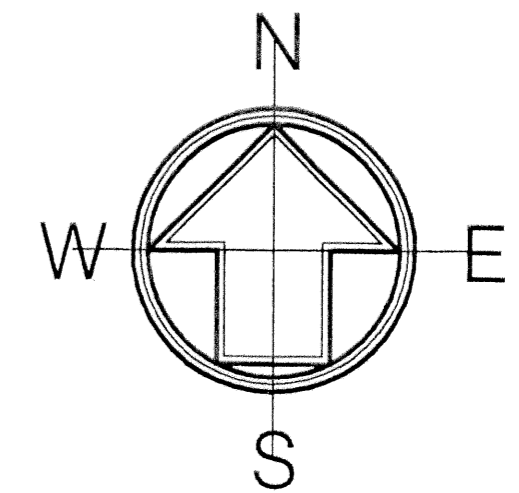
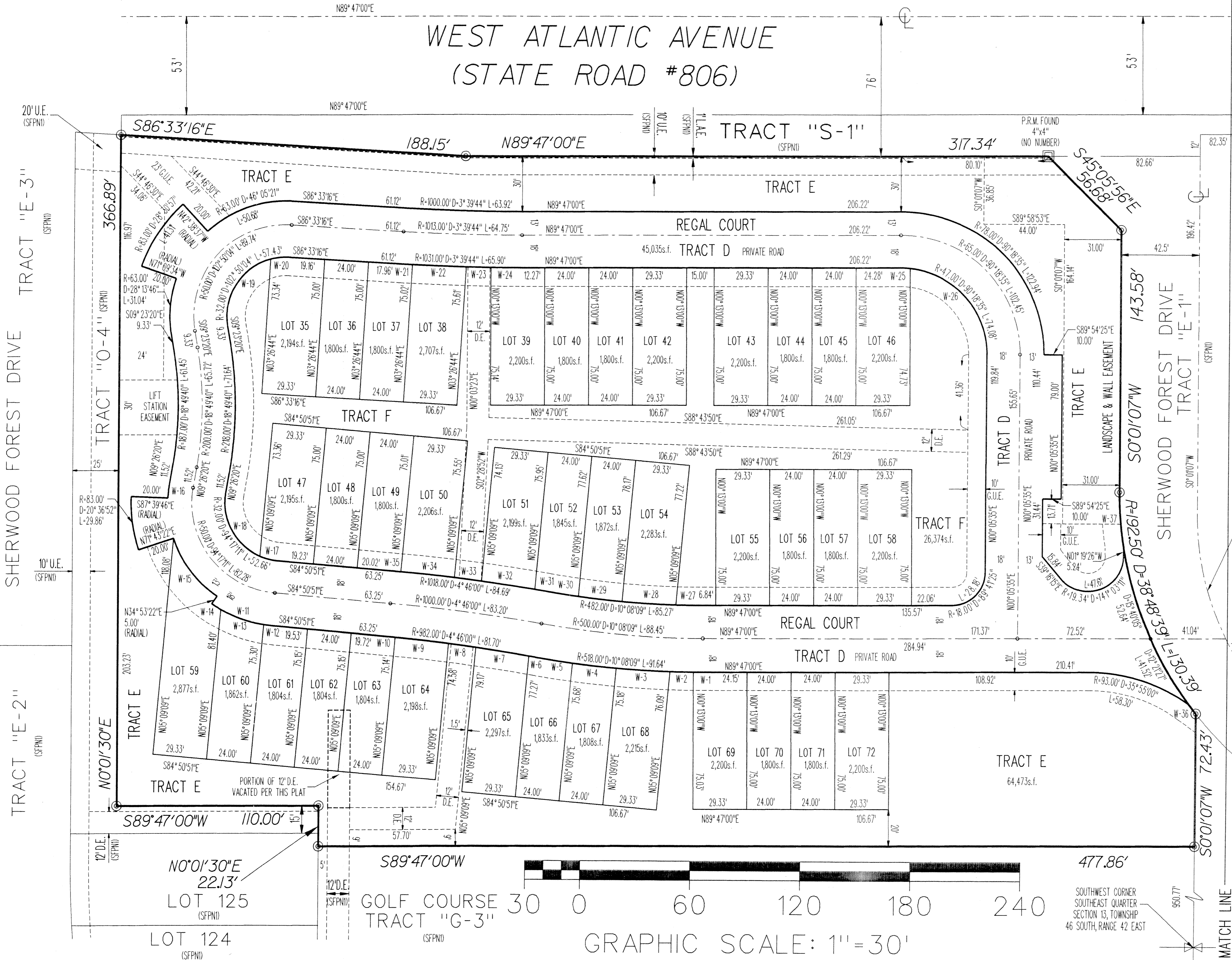
LOCATION SKETCH
 NOT TO SCALE



INDEX MAP
 NOT TO SCALE

STATE OF FLORIDA
 COUNTY OF PALM BEACH
 THIS PLAT WAS FILED FOR RECORD
 AT _____ M. THIS DAY
 OF _____ 20____ AND DULY
 RECORDED IN PLAT BOOK NO. _____
 ON PAGE(S) _____
 DOROTHY H. WILKEN, CLERK OF THE
 CIRCUIT COURT
 BY: _____ D.C.

SHEET 3 OF 3



CURVE TABLE:

CURVE	RADIUS	DELTA	LENGTH	TANGENT	CHORD
W-1	518.00'	0° 34' 23"	5.18'	2.59'	5.18'
W-2	518.00'	1° 24' 21"	12.71'	6.36'	12.71'
W-3	518.00'	3° 14' 47"	29.35'	14.68'	29.35'
W-4	518.00'	2° 39' 20"	24.01'	12.01'	24.01'
W-5	518.00'	2° 15' 18"	20.39'	10.20'	20.39'
W-6	982.00'	0° 12' 50"	3.67'	1.83'	3.67'
W-7	982.00'	1° 42' 54"	29.39'	14.70'	29.39'
W-8	982.00'	0° 52' 33"	15.01'	7.51'	15.01'
W-9	982.00'	1° 42' 43"	29.34'	14.67'	29.34'
W-10	982.00'	0° 15' 00"	4.29'	2.14'	4.29'
W-11	68.00'	29° 44' 13"	35.29'	18.05'	34.90'
W-12	68.00'	3° 46' 15"	4.48'	2.24'	4.48'
W-13	68.00'	20° 58' 56"	24.90'	12.59'	24.76'
W-14	68.00'	4° 59' 02"	5.92'	2.96'	5.91'
W-15	63.00'	36° 5' 00"	40.50'	20.98'	39.81'
W-16	63.00'	7° 06' 06"	7.81'	3.91'	7.80'
W-17	32.00'	18° 23' 53"	10.28'	5.18'	10.23'
W-18	32.00'	75° 53' 18"	42.38'	24.95'	39.35'
W-19	32.00'	84° 17' 35"	47.08'	28.96'	42.95'
W-20	32.00'	18° 32' 29"	10.38'	5.22'	10.31'
W-21	1031.00'	0° 20' 08"	6.04'	3.02'	6.04'
W-22	1031.00'	1° 37' 50"	29.34'	14.67'	29.34'
W-23	1031.00'	0° 44' 53"	13.46'	6.73'	13.46'
W-24	1031.00'	0° 56' 53"	17.06'	8.53'	17.06'
W-25	47.00'	6° 10' 06"	5.06'	2.53'	5.06'
W-26	47.00'	84° 08' 29"	69.02'	42.42'	62.98'
W-27	482.00'	1° 45' 57"	14.81'	7.41'	14.81'
W-28	482.00'	3° 29' 21"	29.35'	14.68'	29.35'
W-29	482.00'	2° 51' 14"	24.01'	12.01'	24.01'
W-30	482.00'	2° 01' 56"	17.01'	8.55'	17.01'
W-31	1018.00'	0° 23' 31"	6.96'	3.48'	6.96'
W-32	1018.00'	1° 39' 58"	29.39'	14.70'	29.39'
W-33	1018.00'	0° 50' 42"	15.01'	7.51'	15.01'
W-34	1018.00'	1° 39' 05"	29.34'	14.67'	29.34'
W-35	1018.00'	0° 13' 28"	3.99'	1.99'	3.99'
W-36	192.50'	1° 50' 08"	6.17'	3.08'	6.17'
W-37	192.50'	8° 56' 58"	30.07'	15.07'	30.04'

- ABBREVIATIONS:
- B.M. - BENCHMARK
 - C - CALCULATED
 - D - DELTA OR CENTRAL ANGLE
 - D.E. - DRAINAGE EASEMENT
 - F.S. - FLORIDA STATUTES
 - INC. - INCORPORATED
 - L - LENGTH
 - L.A.E. - LIMITED ACCESS EASEMENT
 - O.R.B. - OFFICIAL RECORDS BOOK
 - P.B. - PLAT BOOK
 - P.B.C.R. - PALM BEACH COUNTY RECORDS
 - PG. - PAGE
 - R - RADIUS
 - P.R.M. - PERMANENT REFERENCE MONUMENT
 - R/W - RIGHT OF WAY
 - (SFPND) - PER SHERWOOD FOREST PLAT NO. 1 PLAT BOOK 62, PAGES 163-168
 - S.E. - SEWER EASEMENT
 - G.U.E. - GENERAL UTILITY EASEMENT



SCOTT A. GUZZI & ASSOC., INC.
 Surveyors and Mappers
 6041 KIMBERLY BOULEVARD
 SUITE H
 NORTH LAUDERDALE, FLORIDA 33068

LEGACY